

LOS ANGELES COUNTY COMMITTEE  
ON SCHOOL DISTRICT ORGANIZATION

TRANSFER OF TERRITORY  
FROM  
GLENDALE UNIFIED SCHOOL DISTRICT  
TO  
LA CAÑADA UNIFIED SCHOOL DISTRICT

PUBLIC HEARING

October 26, 2016

# PETITIONERS CLOSING COMMENTS

**Scott Tracy**

**LCUSD Governing Board Member (2001-2013)**

# GUSD POSITION

September 7, 2016 - To the County Committee

September 8, 2016 - To GUSD Families and Community

“ ... there is no educational  
(academic) reason for a transfer to  
occur.”

# CA Education Code

§35500.

**“ ... local educational needs and concerns shall serve as the basis for future reorganization of districts in each county.”**

Effective: January 1, 2001

LCFF – **Local** Control Funding Formula

LCAP – **Local** Control and Accountability Plan

- Implementation of the LCFF began in 2013-14
- LCAP is an important component of the LCFF
- LCAP describes how each district intends to meet annual goals with specific activities to address state and **local** priorities [EC § 52060(d)]
  - Effective for a period of three years
  - Shall be updated annually
  - Consistent with **local** community input and values

# LCAP – **Local** Control and Accountability Plan

- The process requires **local** community input and engagement
- Intent is to engage the **local** community to identify and prioritize its goals consistent with its values and sensibilities
- The process acknowledges that different communities have **local** needs and concerns and are empowered to set goals and allocate resources to address them

# LOCAL EDUCATIONAL NEEDS AND CONCERNS

La Canada Unified School District  
Local Control Accountability Plan  
Executive Summary for 2016-2017

## GOAL #2 - Reduce and Maintain Class Size Reduction to Increase Student Performance

- Reduce and/or maintain **TK-3 class size at 22:1 or smaller**
- Reduce class size in **grades 4-6 to 30:1 or below**
- Reduce **9<sup>th</sup> grade ELA and math class sizes to 26:1 and below**
- Maintain those ratios in Years 2-3 of LCAP

# LOCAL EDUCATIONAL NEEDS AND CONCERNS

Glendale Unified School District  
Local Control Accountability Plan  
July 1, 2016 – June 30, 2019

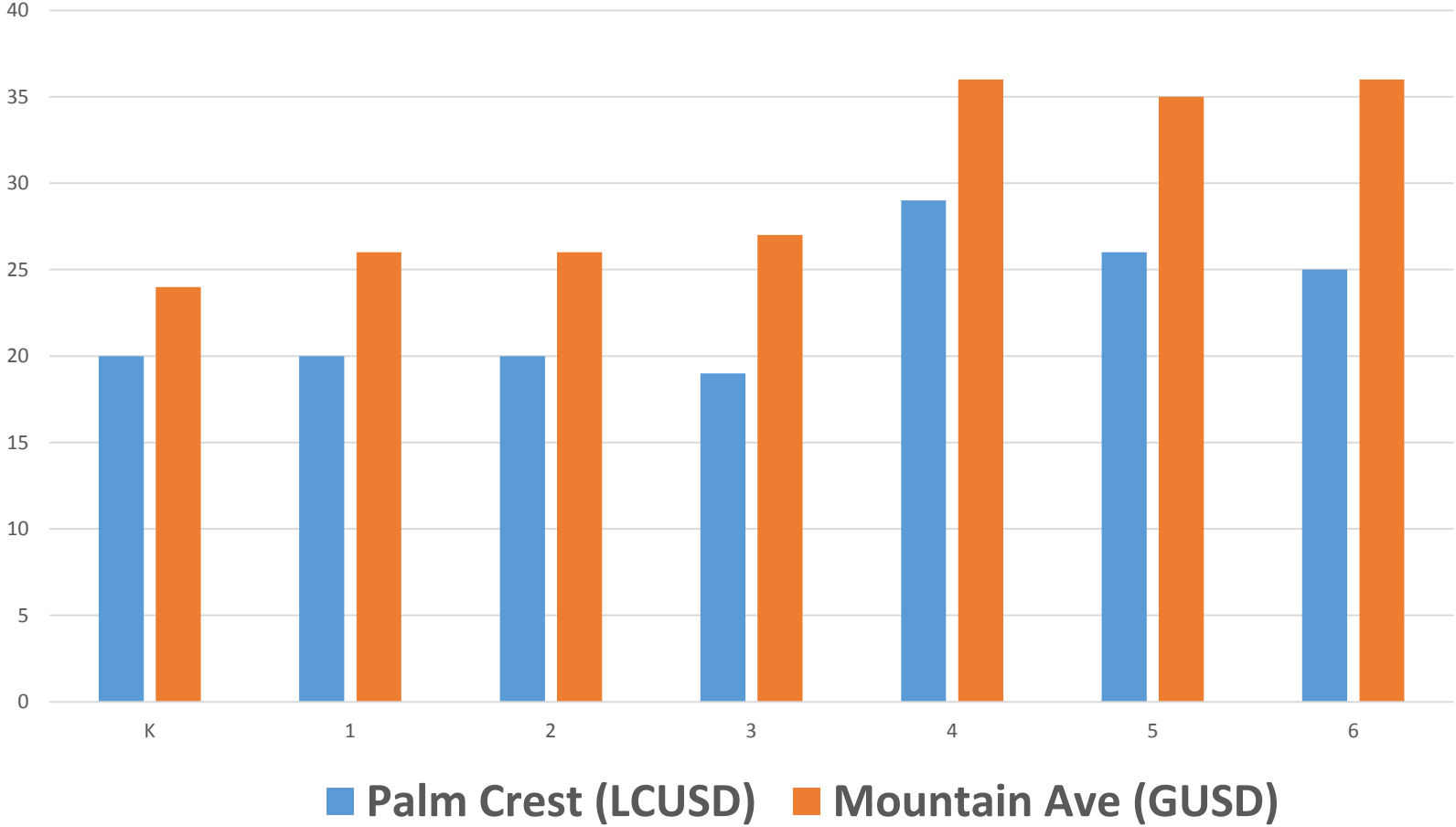
## Actions/Services

- Maintain the reduced class size in **grades 1-3** using the class staffing ratio of **25.9**
- Maintain the reduced class size at the **secondary levels**
- Provide additional staffing above the high school ratio to lower class size at the **continuation high school** program to increase student success
- Provide additional staff, above the class size ratio at the **F.A.C.T.S.** (Foothill Area Community Transition Services) program to support the needs of students



# LOCAL EDUCATIONAL NEEDS AND CONCERNS

## 2015-16 Average Class Size



# LOCAL EDUCATIONAL NEEDS AND CONCERNS

	2015-16 Average Class Size		Percentage
	Mountain Avenue <sup>1</sup> (GUSD)	Palm Crest <sup>2</sup> (LCUSD)	Higher Than Palm Crest
K	24	20	20%
1	26	20	30%
2	26	20	30%
3	27	19	42%
4	36	29	24%
5	35	26	35%
6	36	25	44%

<sup>1</sup> 2014-15 School Accountability Report Card; Mountain Avenue Elementary; Updated 1/8/2016; <http://www.gusd.net/cms/lib03/CA01000648/Centricity/Domain/3/SARC1415MountainAve.pdf>; p. 20.

<sup>2</sup> 2014-15 School Accountability Report Card; Palm Crest Elementary; Published During 2015-16; <http://sarconline.org/SarcPdfs/7/19646596014658.pdf>; p. 11.

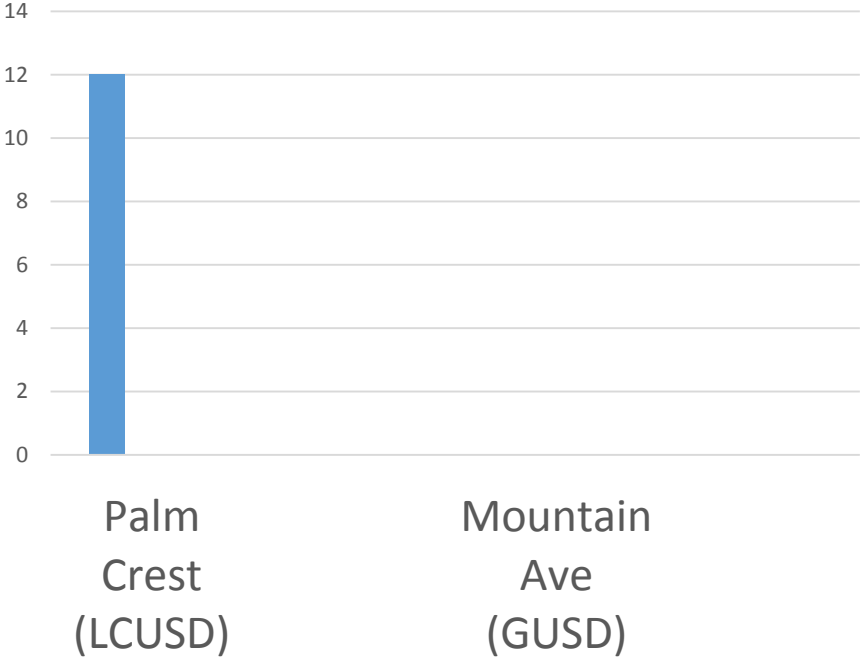
# LOCAL EDUCATIONAL NEEDS AND CONCERNS

Number of Classrooms with 20 or Fewer Students

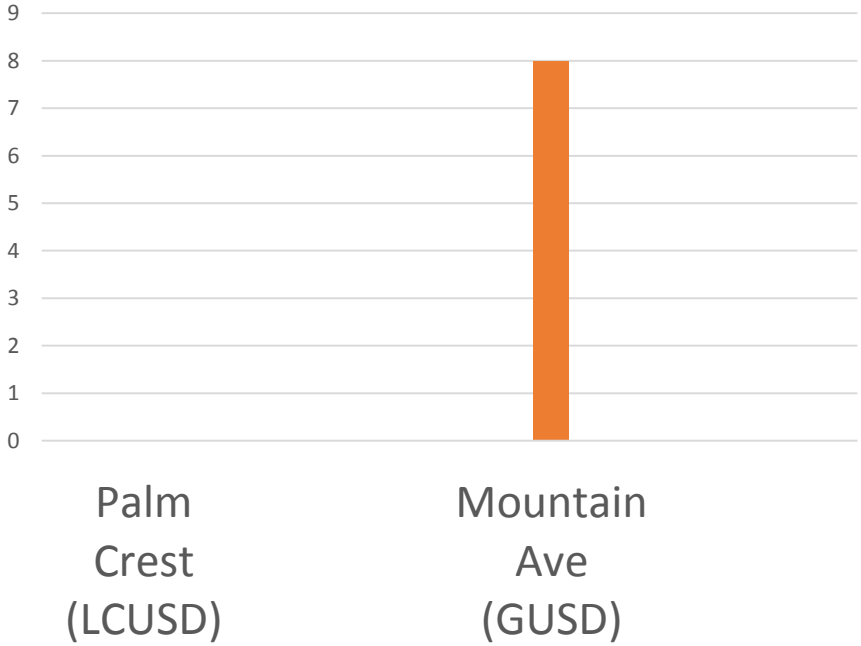


# LOCAL EDUCATIONAL NEEDS AND CONCERNS

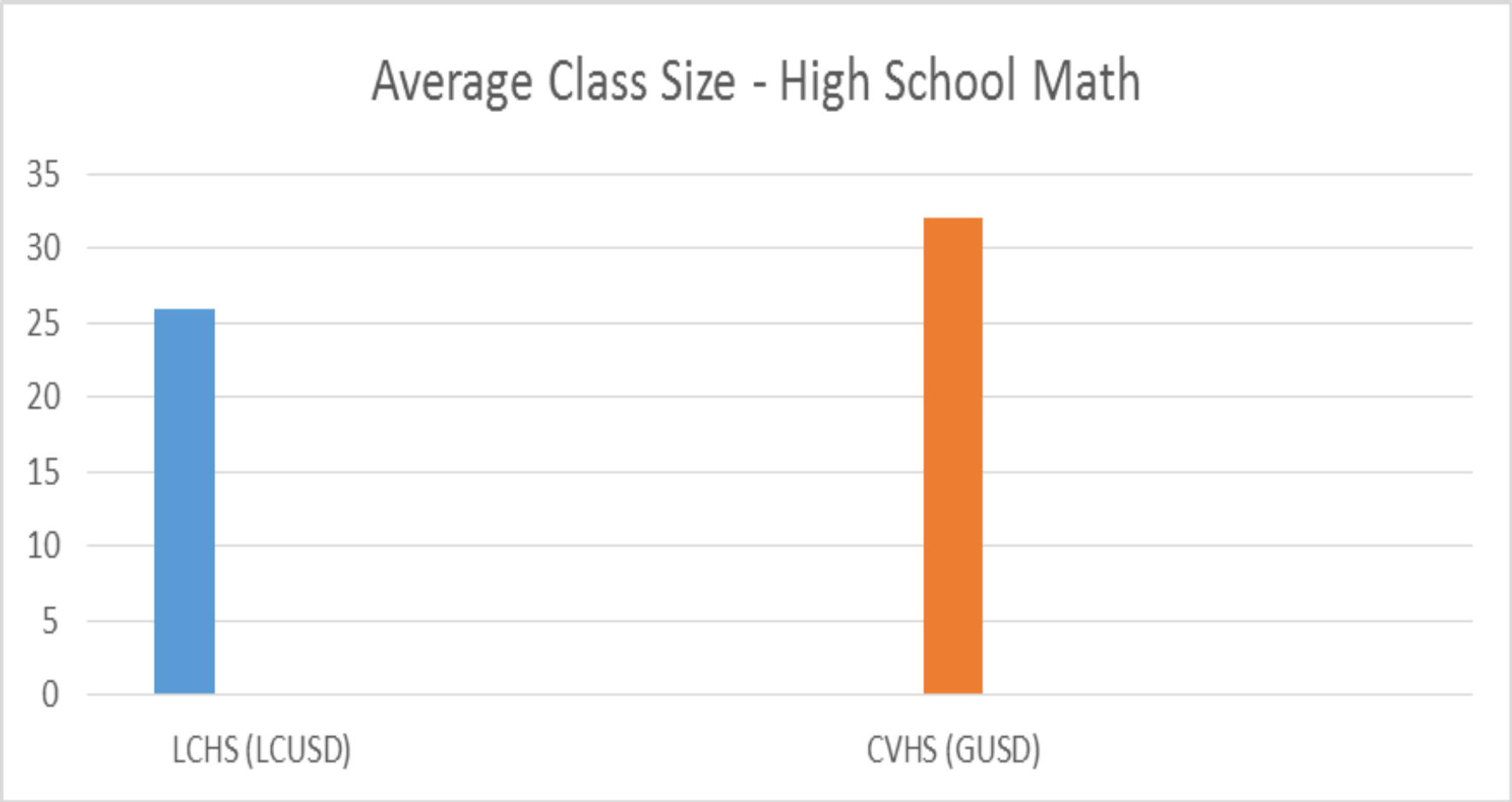
### Number of Classrooms with 20 or Fewer Students



### Number of Classrooms with 33 or Greater Students

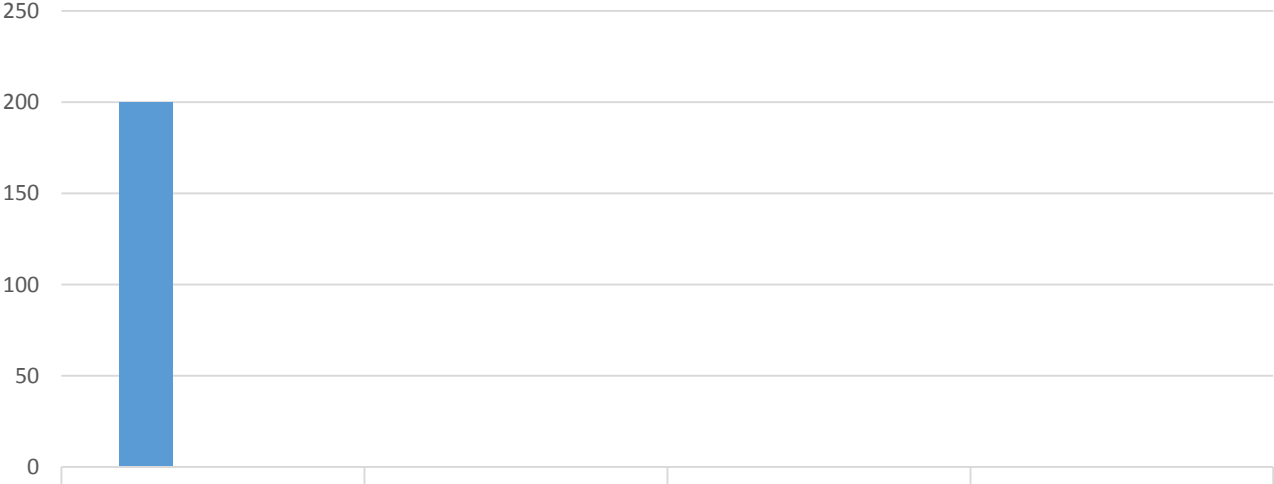


# LOCAL EDUCATIONAL NEEDS AND CONCERNS



# LOCAL EDUCATIONAL NEEDS AND CONCERNS

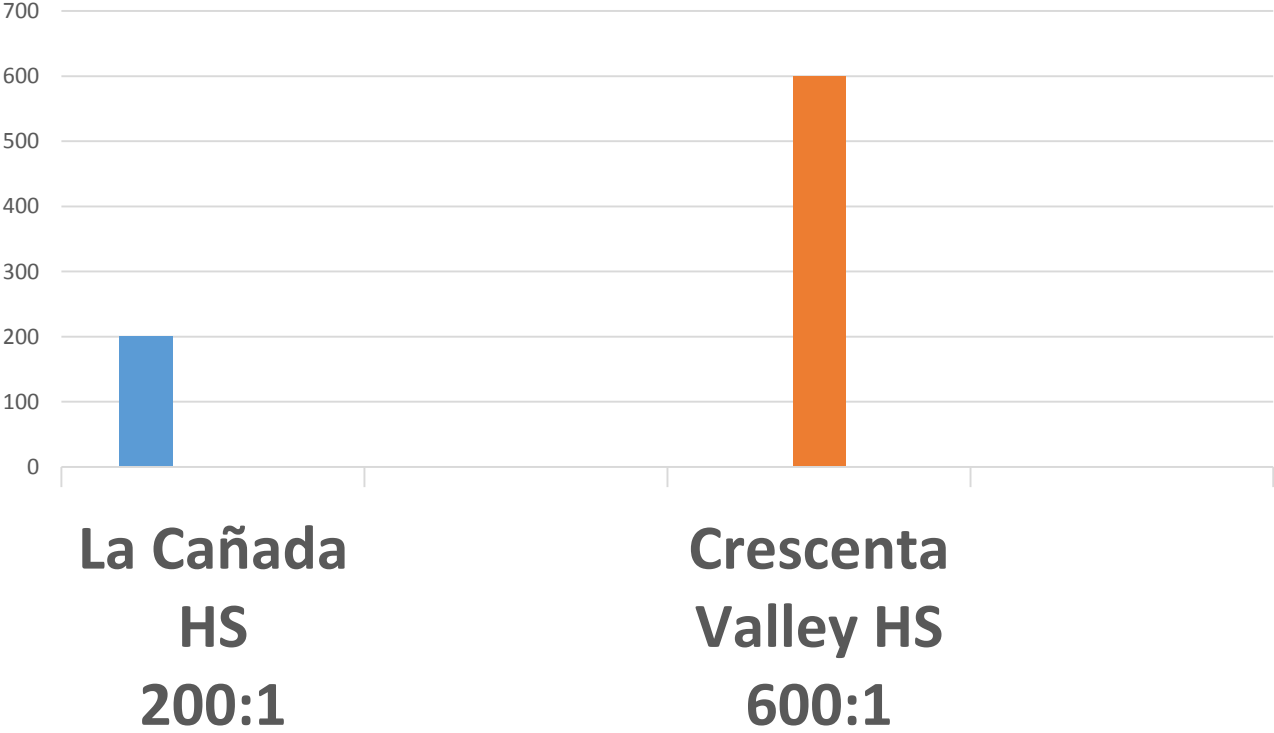
## High School Counselor Caseload



**La Cañada  
HS  
200:1**

# LOCAL EDUCATIONAL NEEDS AND CONCERNS

## High School Counselor Caseload



LOCAL EDUCATIONAL NEEDS AND CONCERNS

LA CAÑADA UNIFIED HAS  
**NO SPLIT CLASSES**



## LOCAL EDUCATIONAL NEEDS AND CONCERNS

- ◇ Our collective goal is to educate, not police
- ◇ Lessons are built on [CommonSenseMedia.org](https://CommonSenseMedia.org)
- ◇ Students engage in learning how to use the technology as a tool
- ◇ We focus student *and* parent education
- ◇ We hope to build an environment where students can safely learn from mistakes

LOCAL EDUCATIONAL NEEDS AND CONCERNS

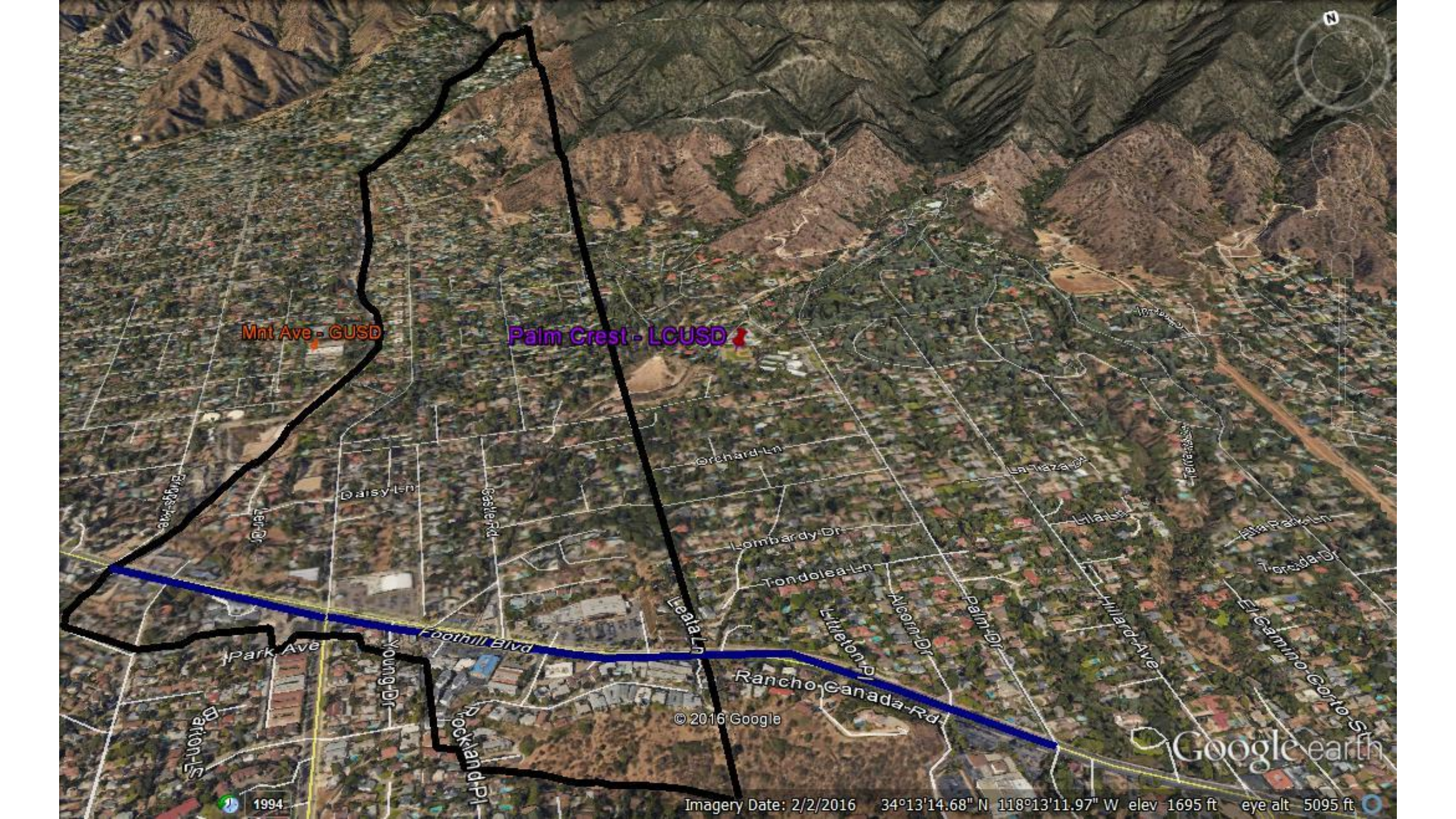
**THE HUFFINGTON POST**

**California's Glendale Unified School District Hires Company To Track Students On Social Media**

**INTERNATIONAL  
BUSINESS  
TIMES**

**Glendale Unified School District Spying On High School Students? Social Media Monitoring To Combat Teen Cyber-Bullying**





Mt Ave - GUSD

Palm Crest - LCUSD

© 2016 Google

Google earth

Imagery Date: 2/2/2016 34°13'14.68" N 118°13'11.97" W elev 1695 ft eye alt 5095 ft

1994

Engle Ave

Van Dr

Daisy Ln

Saddle Rd

Orchard Ln

La Plaza Dr

Terra Vista

Lombardy Dr

Lila Ln

Pala Park Ln

Tondolea Ln

Torres Dr

Leata Ln

Alcorn Dr

Palm Dr

Hillard Ave

Park Ave

Young Dr

Foothill Blvd

Rancho Canada Rd

ErCamino Gorto St

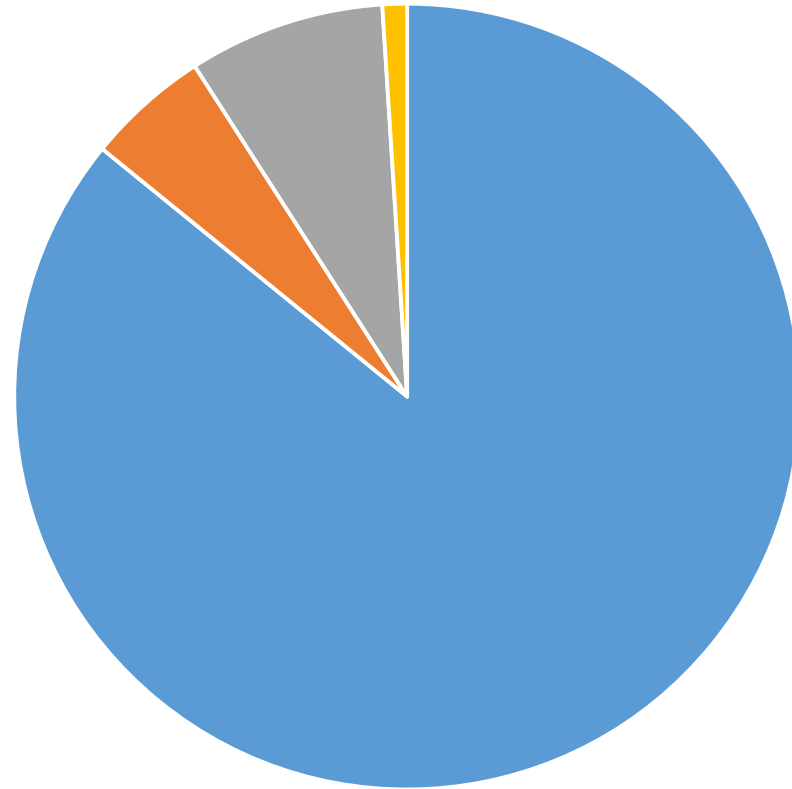
Barton Es

Rockland Pl



## LOCAL EDUCATIONAL NEEDS AND CONCERNS

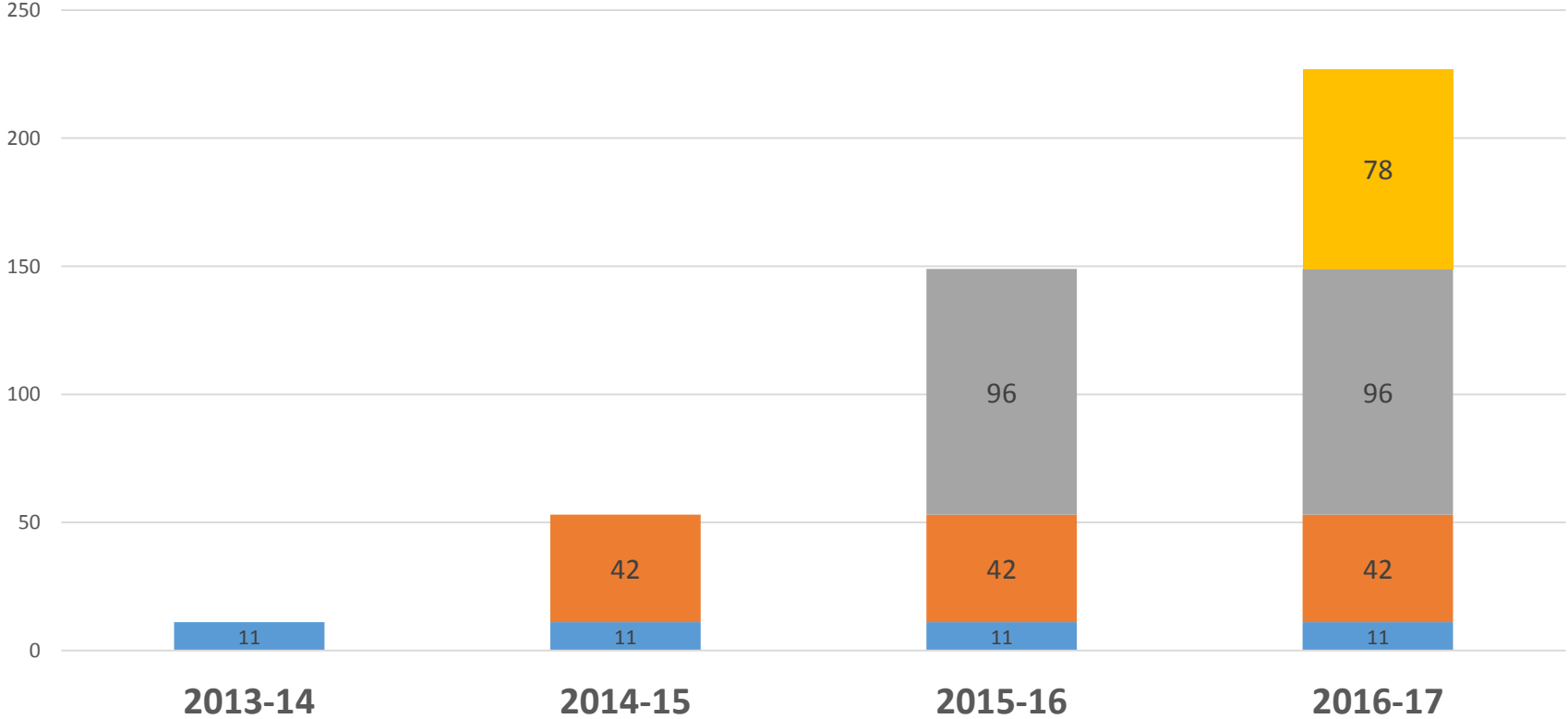
**Do You Support or Oppose the Boundary Change That Would Make Your Household Part of LCUSD?**



■ **Definitely Support** ■ **Probably Support** ■ **Oppose** ■ **Not Sure**

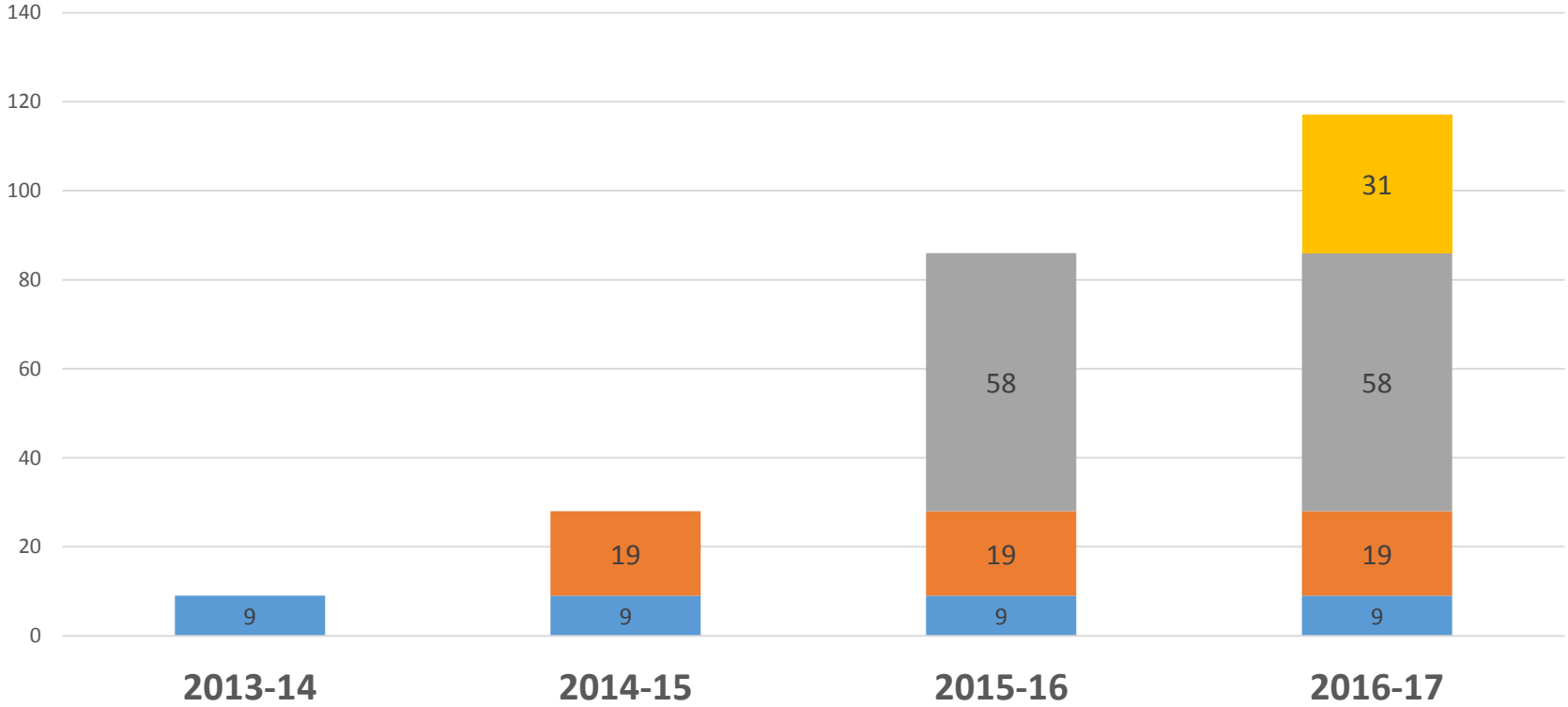
# LOCAL EDUCATIONAL NEEDS AND CONCERNS

**LCUSD Has Received 227 Transfer Requests**  
From Sagebrush Students  
Since Transfer Negotiations Began



# LOCAL EDUCATIONAL NEEDS AND CONCERNS

**GUSD Released 117 Sagebrush Students  
Now Attending LCUSD Schools  
Since Transfer Negotiations Began**



## LOCAL EDUCATIONAL NEEDS AND CONCERNS

### **Smaller class size**

JPL Academy

Grades 1-8 computer coding

Grades 1-8 robotics

### **More counselors**

Grades 1-8 ALF summer school

Grades 9-12 LCFEF summer school

Grades 4-6 ALF instrumental music

Stanford Challenge Success Program

Project Lead the Way STEM program

Grades 3-6 ALF drama program

Spanish at all K-6 campuses

### **Digital Citizenship-CommonSenseMedia**

Kiwanis LCHS Key Club

Kiwanis Terrific Kids

LCF Chamber Summer Internship

### **No split classes**

City of LCF funded programs

Kiwanis LCHS Builders Club

Dedicated Chromebook for each pupil